

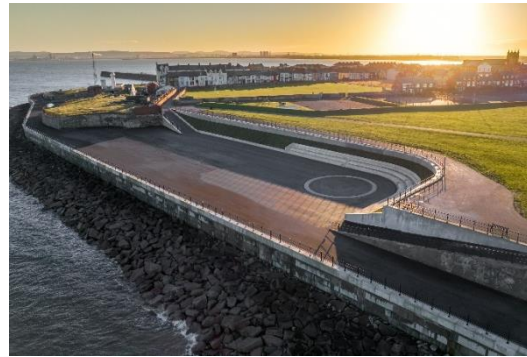
## Heugh Gun Battery



The Heugh Gun Battery is next to the bandstand and promenade. The site is a museum run by volunteers and is open regularly.

A gun battery at the Heugh had been built in 1869, but the construction of the promenades made the ground more stable. This meant that heavier guns could be used and the battery was rebuilt in 1900 with two 6 inch guns.

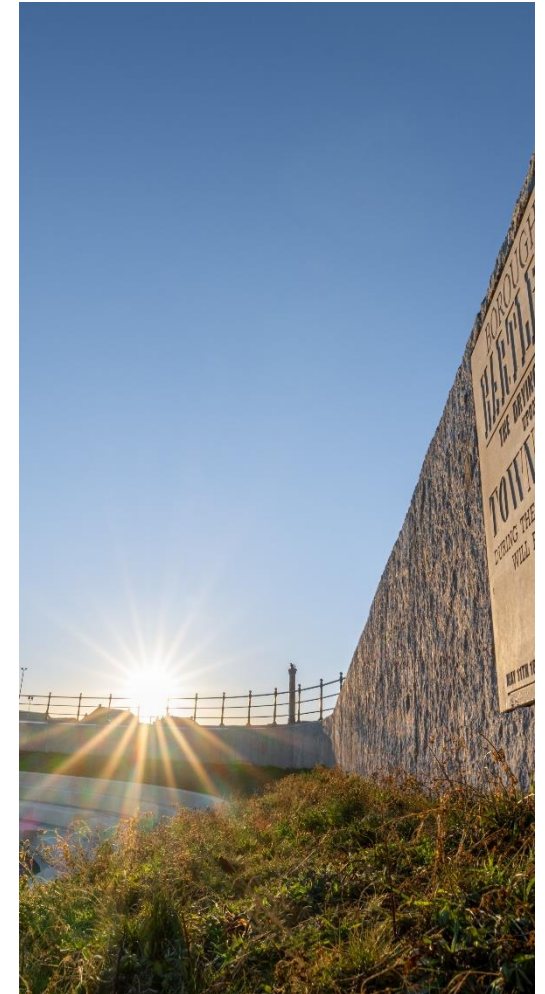
It was these guns that along with the nearby Lighthouse Battery engaged German cruisers on 16<sup>th</sup> December 1914.

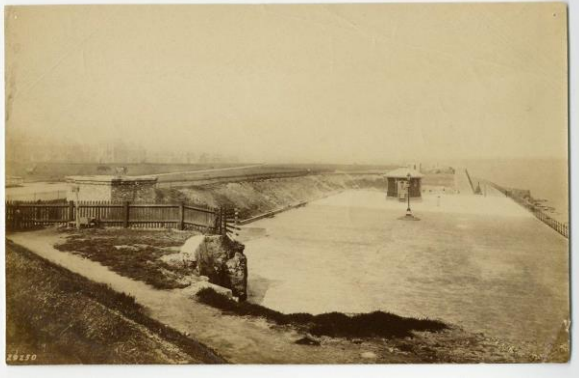


The new Elephant Rock events space is named after a rock formation that could be seen from the site, but collapsed into the sea in 1891.



## Hartlepool Elephant Rock Events Space





## Hartlepool Bandstand

In 1885 an Act of Parliament was passed to allow the construction of sea defences around the headland.

This led to the creation of the Upper and Lower Promenades and the development of the Heugh Gun Battery in its present form.

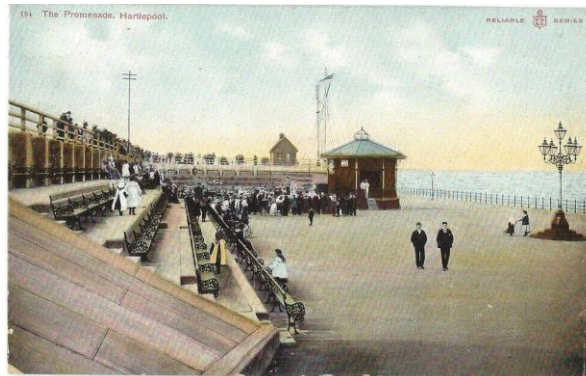
We do not know exactly when the bandstand was completed, but it is shown on maps that date from 1896.

At this time there was a grassy slope down to the promenade with a few benches placed in front of it.



By the beginning of the 20<sup>th</sup> century the slope had been terraced and concreted over to create the appearance we have today.

The area was popular for events and entertainments and there are photographs of huge crowds on site to celebrate the King George V's jubilee in 1935.



In 2021 Hartlepool Borough Council decided to re-furbish the bandstand area, replacing the concrete terracing with the intention of using the area for outdoor events.

This required the removal of all of the concrete terracing and its replacement with pre-cast sections.

Archaeological monitoring took place throughout this process in case evidence of earlier activity was revealed or information about the construction of the Heugh Gun Batteries.



*Limestone cliff and soil with previous concrete terracing.*